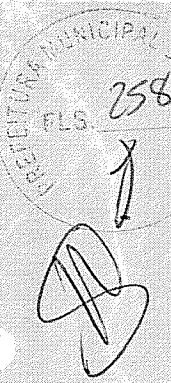


TRAJETO DE SÃO FRANCISCO PARA FLORESTA

Quilometragem: 4.500 m

PRAÇA - SÃO FRANCISCO (341590.00E, 9602294.00S))

ESCOLA - FLORESTA (342162.00E, 9599879.00S)



Chalé Encontro das Brisas

CE-440

Legenda

PRAÇA - SÃO FRANCISCO

Assembleia De Deus - Templo Central

São Francisco

Ererino Duarte ESCOLA PALESTINA

Palestina do Norte

CE-440

Pancho do Lourenço

ESCOLA FLORESTA

CE-440

E.E.F Raimundo Rodrigues de Araujo

Restaurante E-bistro alquimia

Google Earth

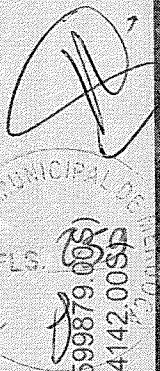
© 2023 Maxar Technologies

1 km

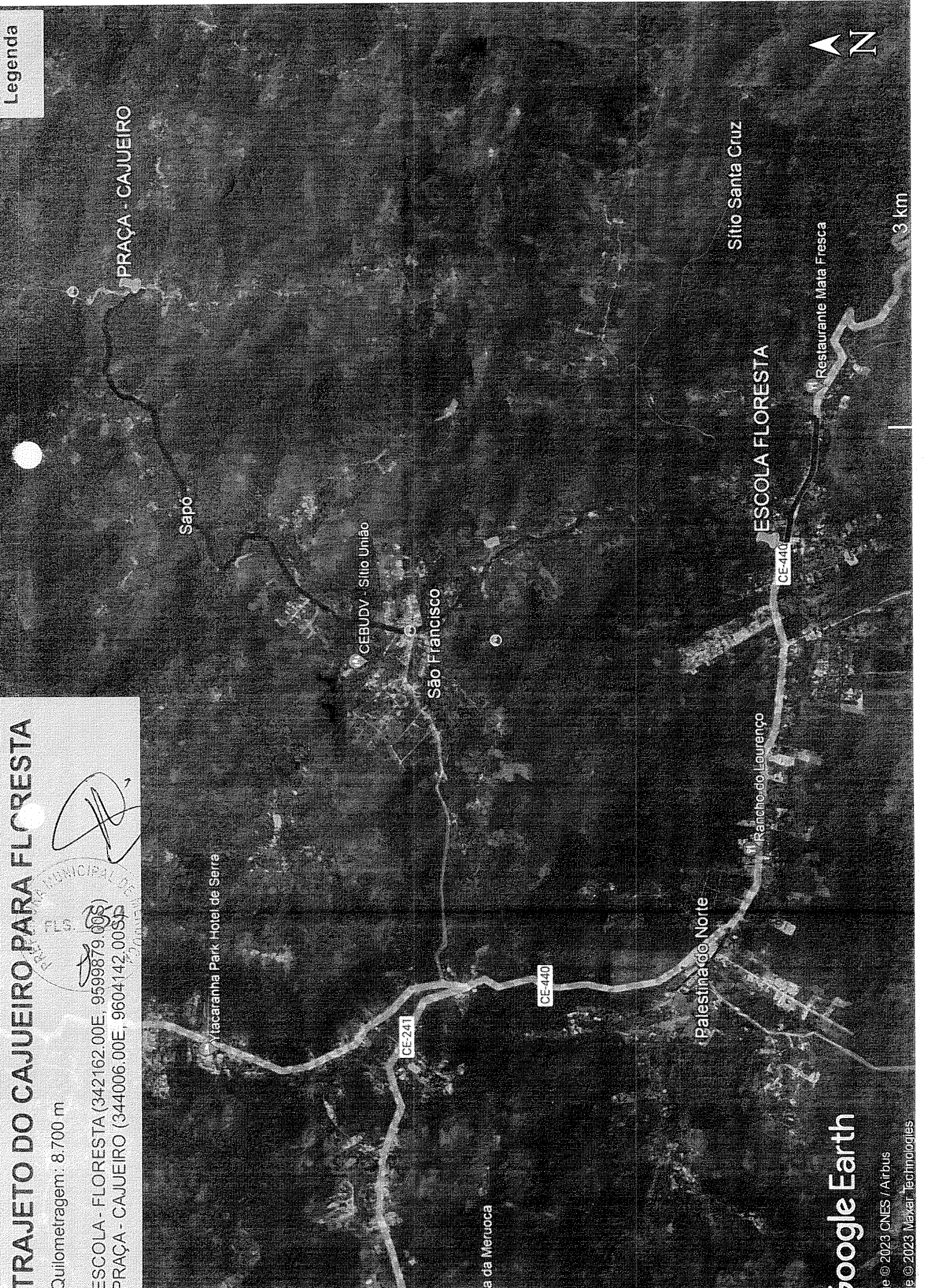
TRAJETO DO CAJUEIRO PARA FLORESTA

Quilometragem: 8.700 m

ESCOLA - FLORESTA (342162.00E, 9599879.00S)
PRAÇA - CAJUEIRO (344006.00E, 9604142.00SD)



Legenda



Google Earth

© 2023 CNES / Airbus
© 2023 Maxar Technologies

SÃO JOÃO DE CIMA / BIFURCAÇÃO - 2,5 KM


KM - 2,5 KM


SÃO JOÃO DE CIMA 337567.56 m E / 9602486.20 m S


BIFURCAÇÃO - 339219.20 m E / 9601950.19 m S



Legenda

 Caminho sem título

 CEBUDV - Núcleo Bendito Filho

 Meruoca

MUNICIPAL DE MERUOCA
FLS. 260
2007

FRIGORÍFICO S.M.

SÃO JOÃO DE CIMA

São João Batista

Sítio do Vovó

BIFURCAÇÃO

Chalé Encontro das Brisas

CE-440

CE-241

CE-241

CE-440









500 m

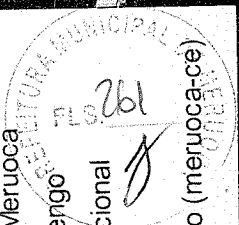
Google Earth

Image © 2024 Maxar Technologies

ANIL / SEDE - 6,1 KM
 KM - 6,1 KM
 ANIL - 333762.00 m E / 9609002.00 m S
 SEDE - 338321.87 m E / 9608594.60 m S m S

Legenda

-  Aroma Café e Conveniência
-  Buraco da Gia - Meruoca
-  Campo do Flamengo
-  Igreja Batista Nacional
-  Meruoca
-  Sítio Mato Grosso (meruoca-ce)



SÍTIO COITÉ

CE-440

ANIL
 Barragem ANIL
 ANIL

Buraco da Gia - Meruoca

Sítio Mato Grosso (meruoca-ce)

Recanto Bela Rio

Restaurante Oca da Alegria

SEDE MERUOCA

Meruoca

DIVINO SALVADOR

Região da Baixa Grande (Meruoca, CE.)

CE-440



1 km

Google Earth

Image © 2024 Maxar Technologies

SÍTIO FRECHEIRAS / BOA VISTA / CE-440 - 4,00 KM

KM - 4,00KM

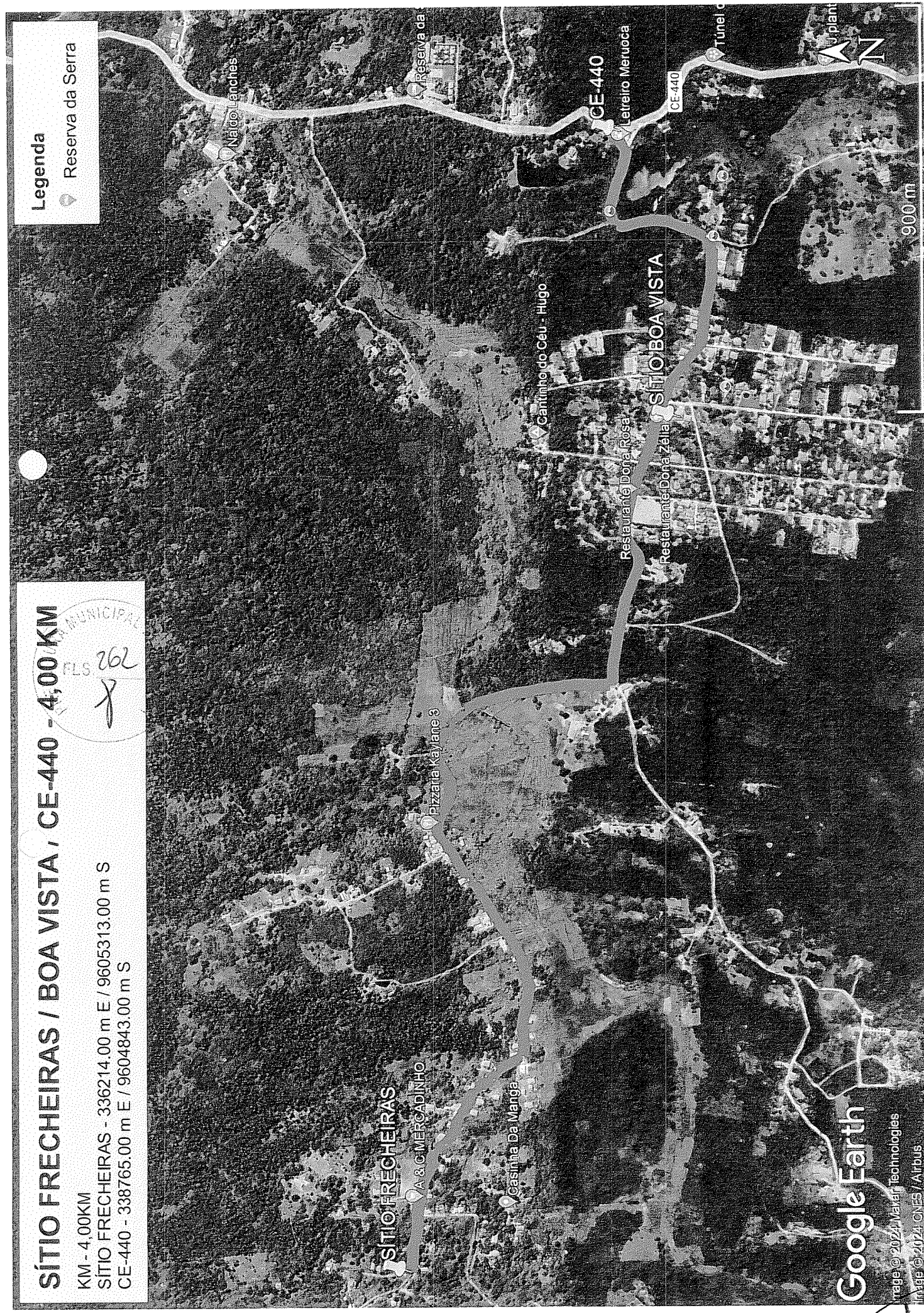
SÍTIO FRECHEIRAS - 336214.00 m E / 9605313.00 m S

CE-440 - 338765.00 m E / 9604843.00 m S

MUNICIPAL
FLS. 262
8

Legenda

Reserva da Serra



Google Earth

Image © 2024, Maxar Technologies
Image © 2024, CNES / Airbus

CAMILOS / SÃO JOÃO / BIFURCAÇÃO - 7,60 KM

KM - 7,60 KM

CAMILOS - 335096.29 m E / 9600203.90 m S

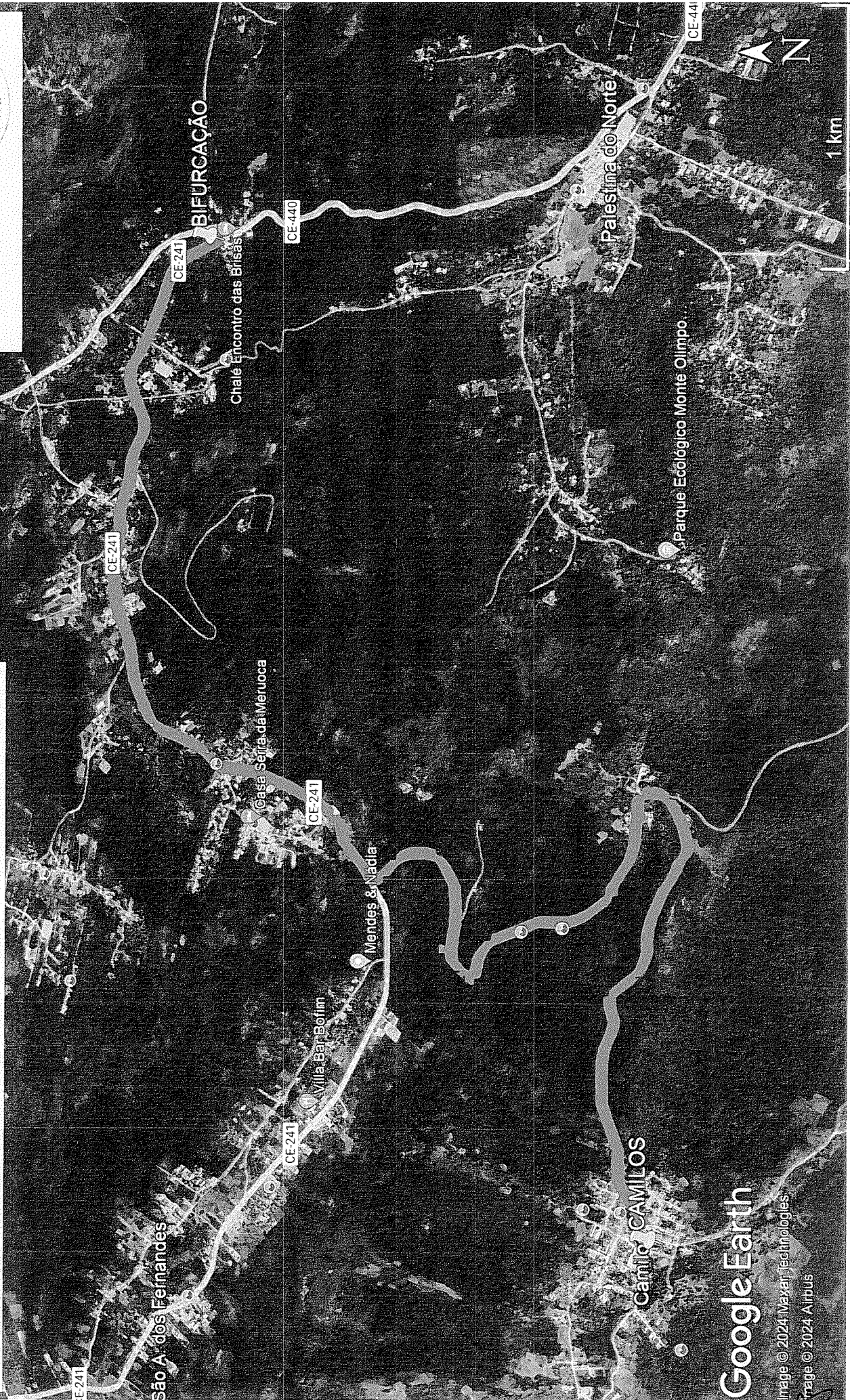
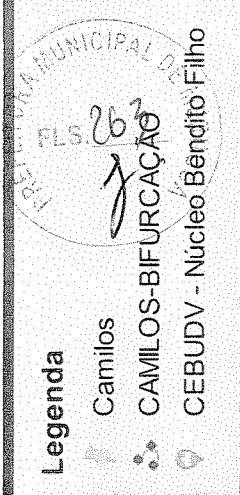
BIFURCAÇÃO - 339188.60 m E / 9602011.54 m S

Legenda

Camilos

CAMILOS-BIFURCAÇÃO

CEBUDV - Núcleo Bendito Filho



Google Earth

Image © 2024 Maxar Technologies

Image © 2024 Airbus

[Handwritten signature]

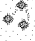
FERNANDES / BIFURCAÇÃO - 8,9 KM


KM - 8,9 KM


FERNANDES - 334144.72 m E / 9604233.08 m S

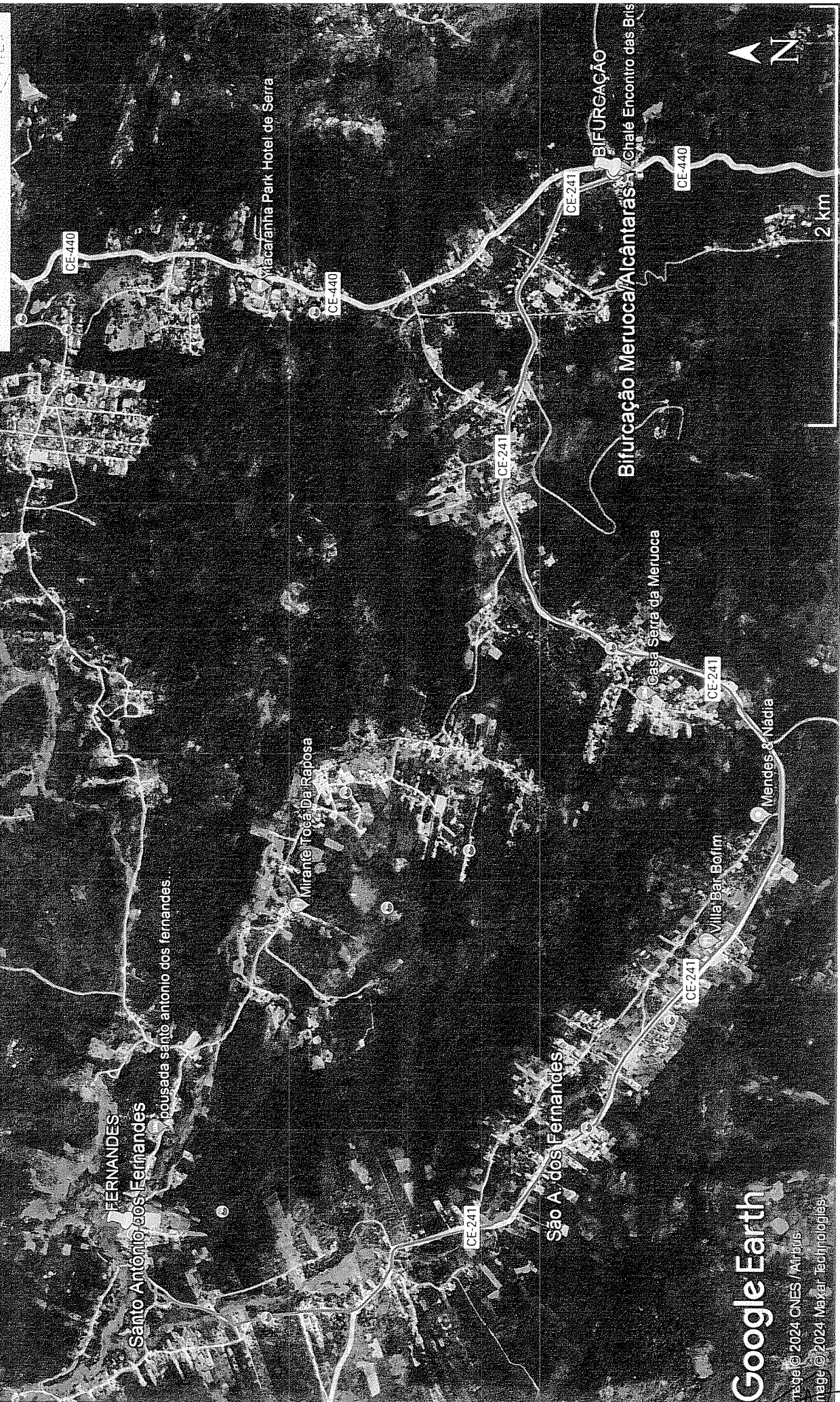
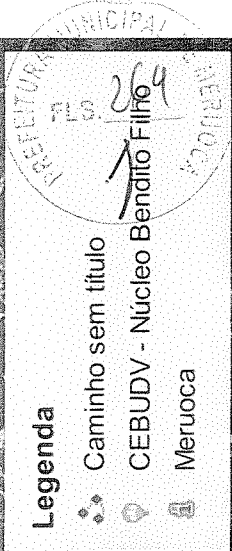
BIFURCAÇÃO - 339219.20 m E / 9601950.19 m S

Legenda

 Caminho sem título

 CEBUDV - Nucleo Bendito Filho

 Meruoca





SÍTIO DO MEIO/FERNANDES / BIFURCAÇÃO - 10,0 KM

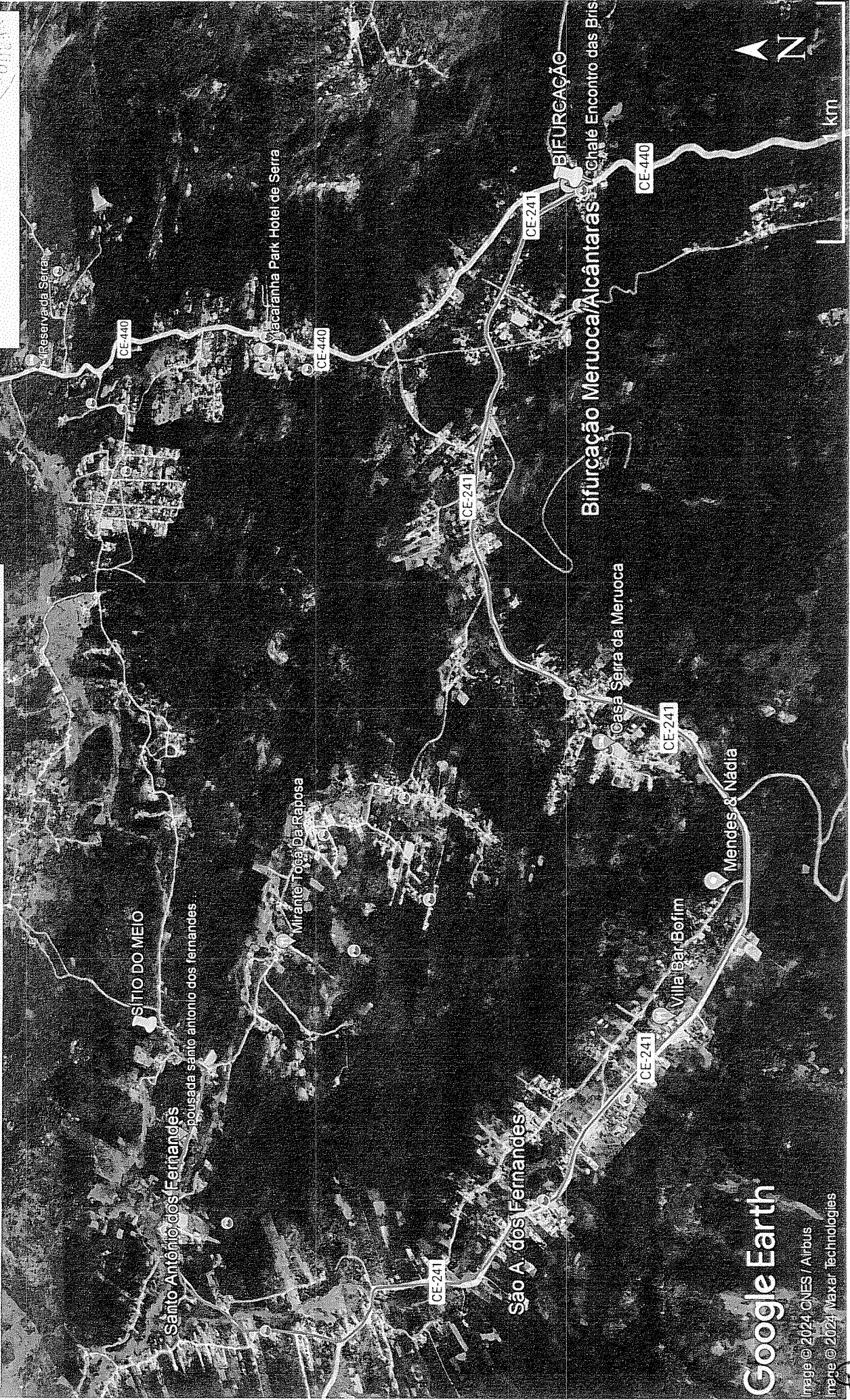
KM - 10 KM

SÍTIO DO MEIO - 335172.00 m E / 9604277.00 m S

BIFURCAÇÃO - 339219.20 m E / 9601950.19 m S

Legenda

-  Caminho sem título
-  CEBUDV - Núcleo Bendito Filhos
-  Meruoca



Google Earth

Image © 2024 CNES / Airbus
Image © 2024 Maxar Technologies